

Registration Details

Please retain a copy
for your records

30 August 2016, Rydges Latimer Square, Christchurch

Rydges in Latimer Square was opened in 2013 and was the first new conference venue to be constructed after the earthquakes. Rydges is the first hotel in New Zealand to be 100% compliant with the new construction safety code.

***NZLS CPD : this seminar will qualify for up to 4 hours. This may be credited towards your 2016-2017 requirement.**

Title:	Name:
Organisation:	
Postal Address:	Postcode:
City:	Tel:
Mobile:	Email:
Special requirements (dietary, accessibility etc)	
<input type="checkbox"/>	<input type="checkbox"/> For catering purposes please tick if you are <u>NOT</u> intending to attend the cocktail party.

Registrant Fees

- Non-profit sector and Students: \$140.00 incl GST
- CWLA Member: \$230.00 incl GST
- Non-Members: \$275.00 incl GST

Note: Non-profit sector spots are limited to 40 and only 2 from each organisation can apply. Once those places are exhausted the standard rates will register at the discounted rate

Please register by 5.00pm on 19 August 2016

Payment Instructions

Please note payment must accompany registration.

- Scan and email this registration form to canterburywla@gmail.com - direct payment to the Canterbury Women's Legal Association bank account 03 0855 0394818 00. Please include your name and payment reference CON16.
- A cheque is enclosed for \$ (Cheques payable to the Canterbury Women's Legal Association). Post your registration with payment to: Canterbury Women's Legal Association, PO Box 3269, Christchurch 8140.

A GST receipt will be emailed to the attendee when payment is received.

**All enquiries should be referred to
Canterbury Women's Legal Association at canterburywla@gmail.com**

Cancellation and Refund Policy

If a participant is unable to attend the seminar, a substitute participant is welcome to attend at no additional cost. A full refund less a service fee of \$50.00 will apply to all cancellations. Cancellations received after midday Monday, 22 August 2016 will not be entitled to any refund, unless a participant is found to fill the place of the person cancelling.



2016 Professional Women's Conference



A conference to be held
on Tuesday 30 August 2016
12pm - 7pm
Rydges Latimer Square,
Christchurch

NZLS CPD: 4 hours*

"In order to succeed we must first believe we can" - Nikos Kzantzakis

The Canterbury Women's Legal Association has hosted successful conferences over the last 3 years with the aim of supporting, educating and inspiring professional women. The conferences have also provided valuable networking opportunities for professional women in Christchurch. The CWLA again offers a conference with inspirational speakers and a valuable workshop that will inspire and motivate the attendees.

2016 – Professional Women's Conference

The CWLA with the generous support of our sponsors are delighted to have **Lucy Cornell** as our keynote speaker and also to run a valuable workshop. Lucy inspires leaders in 15 different countries to use their voice to change the world by connecting and engaging with their audience. She is known internationally for her work with lawyers. Her theme will be "A Woman's Voice Means Business".

Our other inspirational speakers include **Dame Silvia Cartwright, The Hon Amy Adams, Joanna Perry** and **Claire Turnbull**.

The CWLA is providing a limited number of places at a significant discount to persons in the Not-for-profit sector and students

SPONSORS:

BUDDLE FINDLAY
NEW ZEALAND LAWYERS



PROGRAMME:

11:45 – 12:30 pm	Lunch / Registration
12:30 – 12:40 pm	Welcome - Kathryn Beck
12:40 – 12:45 pm	Buddle Findlay - <i>Sponsor</i>
12:45 – 12:55 pm	Opening - Mayor Lianne Dalziel
12:55 – 1:00 pm	<i>Introduction to Lucy Cornell</i>
1:00 – 1:30pm	Lucy Cornell - “A Woman’s Voice Means Business”
1:30 – 1:35 pm	<i>Introduction to Dame Silvia Cartwright PCNZM DBE QSO</i>
1:35 – 2:05 pm	Dame Silvia Cartwright - “The Economic Cost of Domestic Violence”
2:05 – 2:10 pm	Simpson Grierson - <i>Sponsor</i>
2:10 – 2:15 pm	<i>Introduction to Joanna Perry</i>
2:15 – 2:45 pm	Joanna Perry - “Governance”
2:45 – 3:05 pm	Afternoon Tea
3:05 – 3:10 pm	<i>Introduction to The Hon Amy Adams</i>
3:10 – 3:40 pm	The Hon Amy Adams - “Tips from the Top”
3:40 – 4:40 pm	Lucy’s workshop - “A Woman’s Voice Means Business”
4:40 – 4:45pm	Craigs Investment Partners - <i>Sponsor</i>
4:45 – 4:50pm	<i>Introduction to Claire Turnbull</i>
4:50 – 5:35pm	Claire Turnbull - “Making Healthy Happen & Boosting Your Energy Levels (Even When Life is REALLY Busy)”
5:35 – 5:45pm	Conclusion - Kathryn Beck
5:40 – 7:00pm	Cocktail Party

PRESENTERS:



Kathryn Beck - Chair

Kathryn is the current President of the New Zealand Law Society. She is the third woman to hold this position. She has extensive experience in all areas of employment law and industrial relations and is a partner in the employment law firm of SBM Legal. Kathryn is also experienced in alternative dispute resolution and acts as a mediator, facilitator and independent investigator.



Lucy Cornell - Keynote Speaker

Lucy Cornell is a director of Voice Coach based in Sydney and works with professionals to develop their vocal presence. She inspires leaders to use their voice to change the world. She is internationally recognised for her work with barristers and litigators, as well as in the corporate leadership environment. The organisations she has worked with include the International Advocacy Training Council and the Advocacy Training Council of the Bar of England and Wales.

As an author, speaker and voice coach working internationally, Lucy has for over a decade empowered business leaders to connect and engage with their audience with an authentic voice; one that demonstrates presence, credibility, persuasive power, confidence and vision.



Dame Silvia Cartwright PCNZM, DBE, QSO

Dame Silvia graduated with an LLB from Otago University and after several years in private practice, embarked on a judicial career that culminated in her appointment to the High Court Bench.

In 1987 Dame Silvia chaired the Commission of Inquiry into treatment of Cervical Cancer (The Cartwright Inquiry), and she was a member of the United Nations Committee monitoring compliance with CEDAW.

She was made a Dame Commander of the Order of the British Empire in 1989 and Principal Companion of the New Zealand Order of Merit in 2001 and received the Queen’s Service Order in 2006.

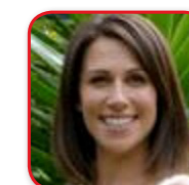
After completing her tenure as Governor-General in August 2006, she took up the position as trial judge on the United Nations Tribunal investigating war crimes in Cambodia in the 1970s.



The Hon Amy Adams

Minister Amy Adams is the Member of Parliament for Selwyn District, and the first Minister of Justice to come from Canterbury in 90 years. Before being elected to Parliament in 2008, Minister Adams was a partner with a Christchurch law firm.

In 2014 Minister Adams became the Minister of Justice, Minister for Courts, Minister of Broadcasting and Minister of Communications. Across her portfolios Minister Adams’ priorities include family and sexual violence, supporting victims, rural connectivity and completing the Government’s Ultra-Fast Broadband project.



Claire Turnbull

Claire was born and raised in the UK where she trained as a Dietitian and Fitness Trainer. She moved to New Zealand in 2005 to work in health education before setting up a private practice, Mission Nutrition. This has developed to a team of Dietitians and Nutritionists.

She spreads her message of healthy eating and taking care of yourself, working as a Nutritionist for Healthy Food Guide Magazine and regularly appearing on TV and radio to discuss health and wellness. She has written two best selling books “Lose Weight for Life” and “Feel Good for Life “ both published by Penguin.



Joanna Perry OMNZ

Joanna Perry has a Master of Arts in Economics from Cambridge University. After graduating she worked in Bristol for Peat Marwick, now KPMG, and became a partner with the firm in Auckland in 1988.

Her governance career began when she left KPMG in 2006 and became a director of Kiwi Income Property Trust. Ms Perry is now a director of Genesis Energy, TradeMe Group, Kiwi Income Property Trust, The Co-operative Bank, Sport New Zealand, Rowing New Zealand and Partners Life.



The Hon Lianne Dalziel Mayor of Christchurch

Lianne Dalziel was born and raised in Christchurch where she has lived all her life. After completing her law degree at Canterbury University and qualifying to practise law, she worked in the trade union movement until entering Parliament in 1990. She represented Christchurch Central for two terms, had one term as a List MP and then represented Christchurch East until leaving Parliament in 2013 to contest the Christchurch Mayoralty. Lianne served in the Cabinet led by Prime Minister, Helen Clark, (1999-2008), holding a range of portfolios including Commerce.

Lianne was a strong advocate for the people in the eastern suburbs of Christchurch affected by the 2010/2011 earthquakes and was appointed to the UNISDR’s Parliamentary Advisory Group on Disaster Risk Reduction in 2012. She was elected Mayor on 12 October 2013.